

**SOLID PRODUCTS, LLC**  
SOLID DECISION

## **SOLID SURFACE SHOWER PAN INSTALLATION INSTRUCTIONS**

### **TOOLS AND SUPPLIES NEEDED FOR INSTALLATION**

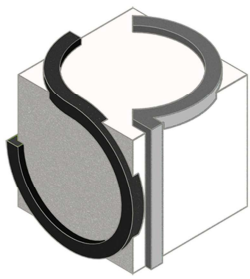
- Level
- Shims
- Drain fitting
- Wrench
- 5 Gallon Bucket
- Tool for mixing thin-set mortar
- Hot melt glue
- Silicone
- ½" - ¾" Grooved trowel
- Thin-set mortar (must meet ANSI A118.4 or A118.11 standards)
- (Optional) Self-leveling concrete

### **PREPARING THE INSTALLATION SITE**

- Open shower pan and check the Solid Surface Shower Pan for any damage during shipping.
- Scrape the floor of the shower pan alcove and clean it carefully. This space must be clear of debris in order to get proper adhesion with the thin-set mortar.
- Measure the alcove to insure that it is square and plumb, and that the pan and wall panels fit correctly.
- Trial fit the Solid Surface Shower Pan in the alcove and make sure that the drain location lines up properly with the shower pan. The pan should slide in easily with approximately 1/16"-1/8" spacing between the studs and the pan. Placing a level on the flat sides of the Solid Surface Shower Pan, check that it sits level on the floor. Use shims to level the pan in the alcove if needed. Hot melt glue the shims to the floor/substrate so the pan will sit level after applying the thin-set. Remove the Solid Surface Shower Pan from the alcove.

### **INSTALLING THE SOLID SURFACE SHOWER PAN**

- Install the drain fitting into the Solid Surface Shower Pan. Follow the installation instructions that came with the drain.
- For new installations, proceed to the next point. If the shower pan is being installed over old tile follow the next two instructions and proceed to the next point:
  1. A plumber must extend the existing drain pipe.
  2. Use self-leveling concrete to level the floor.
- Mix and apply thin-set mortar to the floor, using the ½" - ¾" notched trowel. Spread the mixture to achieve a depth that fills the voids in the floor and enable the Solid Surface Shower Pan to sit level. All supporting points



**SOLID PRODUCTS, LLC**  
SOLID DECISION

## SOLID SURFACE SHOWER PAN INSTALLATION INSTRUCTIONS

should have contact with the thin-set mortar. Pay attention to the drain area, and make sure there is mortar supporting it, especially when installing over a previous tiled shower. More thin-set is always better than less.

- Set the pan into place. Make sure the pan is resting level on the thin-set and shims and the drain is centered.
- Clean the area at the threshold of any excess thin-set. Allow the thin-set to cure for 24 hours before working in the Solid Surface Shower Pan area. Be sure to protect the Solid Surface Shower Pan floor after installation, using cardboard sheeting, thick plastic or a similar material, until the entire project is finished.
- Before proceeding to install the wall system, flood test the shower pan for proper drainage.

